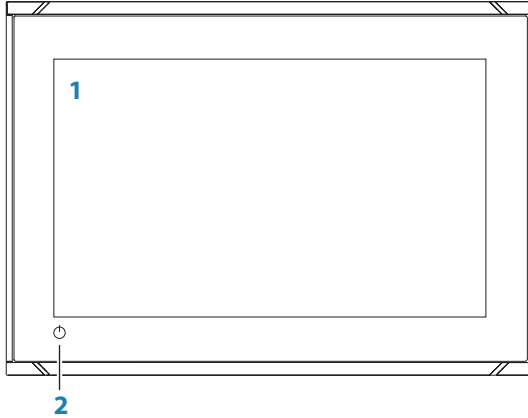


# B&G<sup>®</sup> Vulcan™ Series

## Quick Guide

EN

### Front panel

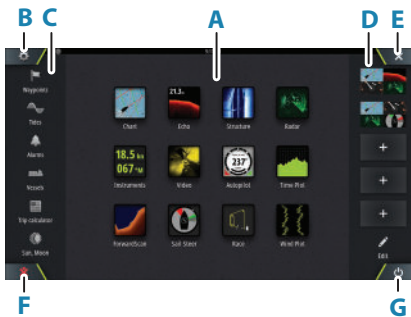


#### 1 Touch Screen

#### 2 Power key

- Press and hold: turns the unit ON/OFF.
- Short press once: displays the System Controls dialog.
- Repeat short presses: toggles through preset dimming levels.

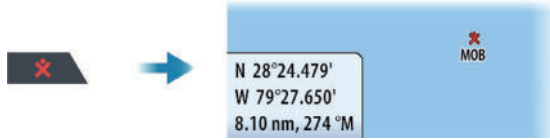
### Home page



- A.** Application buttons
- B.** Settings button
- C.** Tools
- D.** Favorites
- E.** Close button
- F.** Man Over Board (MOB) button
- G.** System Controls button

## The MOB mark

To create a MOB mark: press the MOB button.

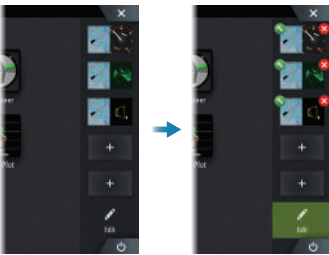


To stop displaying navigational information to the MOB waypoint: cancel the navigation from the menu.

## Edit a favorite page

Enter the Favorites edit mode:

- Tap the Edit icon.
- Press and hold a favorite button.



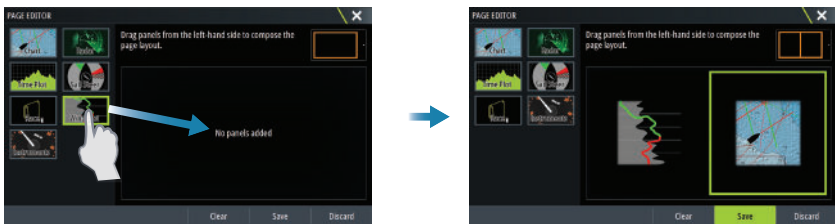
 Edit favorite page

 Delete favorite page

 Add new favorite page

Edit an existing favorite page or configure a new page by dragging panel icons into or out from the preview area.

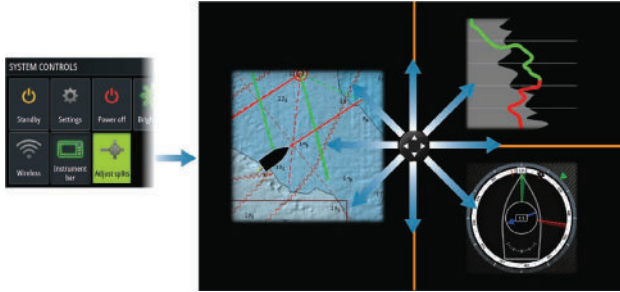
Save the changes by tapping the Save button.



## Adjust panel size

You can adjust the panel sizes in a split page.

1. Tap the adjust split button in the System Controls dialog to show the resize icon
2. Drag the resize icon to set preferred panel size
3. Save the changes by tapping the screen

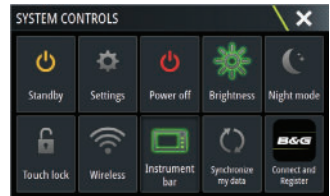


## System Controls dialog

Used for quick access to system settings.

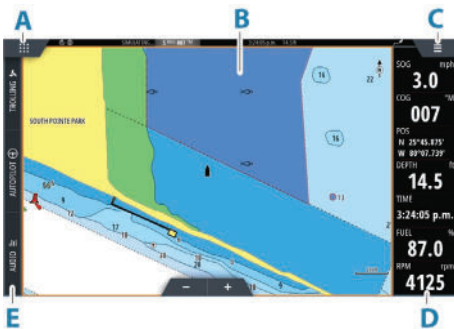
Activate the dialog by:

- Pressing the Power key
- Selecting the system controls button on the home page
- Swiping from the top of the screen



→ **Note:** The content of the System Controls dialog depends on connected equipment and active panel.

## Application pages



- A. Home/pages button
- B. Application panel
- C. Menu button
- D. Instrument bar
- E. Control bar

## Charts

- Zoom the chart by using spread or pinch gestures, or by using the zoom buttons.
- Move the view in any direction by panning the chart.
- Display information about a chart item by tapping the item.



## Waypoints

To create a waypoint: select the new waypoint option in the menu.

- **Note:** With cursor inactive, the waypoint is placed at vessel's position. With cursor active, the waypoint is placed at selected cursor position.

## SailSteer panel

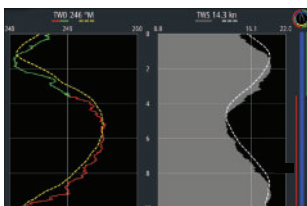


SailSteer provides a composite view of key sailing data. All data is displayed relative to the yacht's bow. The number of data fields included in the panel is dependant on available panel size.

## Laylines on Chart and SailSteer panels

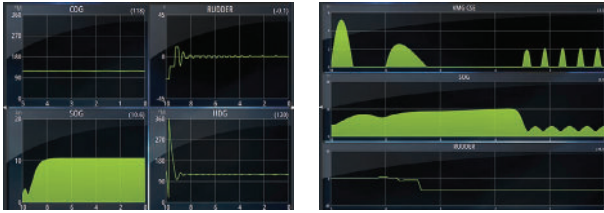


## WindPlot panel



Wind direction and wind speed.

## TimePlot panels



Two predefined layouts. Tap left/right panel arrow to switch between layouts.

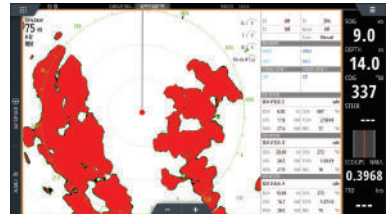
## Autopilot

- Activate the autopilot controller from the Control bar.
- Select an autopilot mode by pressing the mode button on the Control bar.
- Switch to standby mode from the autopilot controller or by using physical Standby key.



## Radar

- Turn the radar transmitting ON/OFF from the menu.
- Adjust radar range by using the zoom buttons on the radar panel.



## Product manuals

For the full Operator manual, technical specifications and declarations, refer to the product website on: [www.bandg.com](http://www.bandg.com)